



SCHOOL REPORT CARD 2008
Arizona Department of Education

Tom Horne Superintendent of Public Instruction
 Research and Evaluation Section
 (602) 542-5151 / reportcards@azed.gov

Principal	Santo Nicotera snicotera@elpueblointegral.org
Entity ID	87441
CTDS	108797101
Grades Served	6 - 8
Students Enrolled	66
Type of School	Charter Facility
Office Hours	7:30 AM to 5:00 AM
Number of Instruction days	Not Avail
School Year Start and End	Not Avail

Paulo Freire Freedom School
 El Pueblo Integral - Teaching & Learning Collaborative

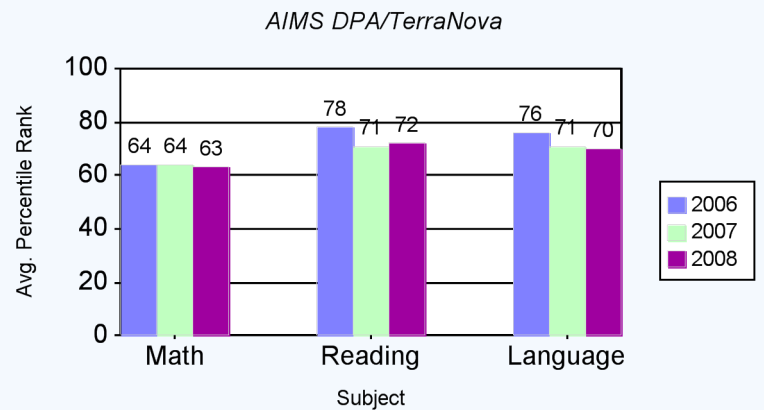
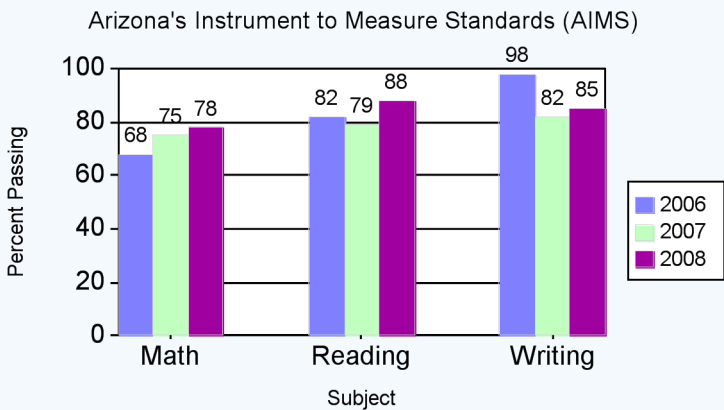
300 E. University Blvd.
 Tucson, AZ, AZ 85705
 (520) 624-7552 office
 (520) 624-7518 fax
 www.paulofreireschool.org

School Mission and Goals

The mission of Paulo Freire Freedom School is to be a school where powerful and transformative teaching and learning are the norm and not the exception; where the whole person (body, heart, mind and soul) and the whole community are supported and challenged; where social justice and environmental sustainability are the curricular focus; and where diversity among individuals and communities and the unique developmental journey of each is honored and celebrated.

AZ LEARNS Profile For The School	Excelling
The Federal School Improvement Status	N/A
The AYP Status For This School	Met

Test Results for Spring 2007



Measure of Academic Progress (MAP)

Subject	Number in Analysis	Avg Growth Index For School	Avg Growth Index for State
MATH	68	2	-3
READ	68	8	-1

On Campus Incidents 0

Paulo Freire Freedom School is committed to creating a safe learning environment where students respect and care for each other. We work hard in our advisory groups to follow student created norms. Additionally, we have a student run Restorative Justice Council that works to peacefully resolve conflict and restore balance when it has been breached.

Arizona English Language Learners Assessment (AZELLA)

Number of English Language Learners	Not Avail
Percent Reclassified as Proficient	Not Avail

School Performance Measures

Attendance Rate	95%
Promotion Rate	99%
Dropout Rate	0%
Four-Year Graduation Rate*	NA
Five-Year Graduation Rate*	NA

* - Graduation Rate does not apply to K-8 Schools
 NA - Not Applicable

The Arizona Department of Education of the State of Arizona does not discriminate on the basis of race, religion, color, national origin, sex, disability or age in its programs, activities or in its hiring and employment practices. For questions or concerns regarding this statement, please contact Administrative Services at 602-542-3186.